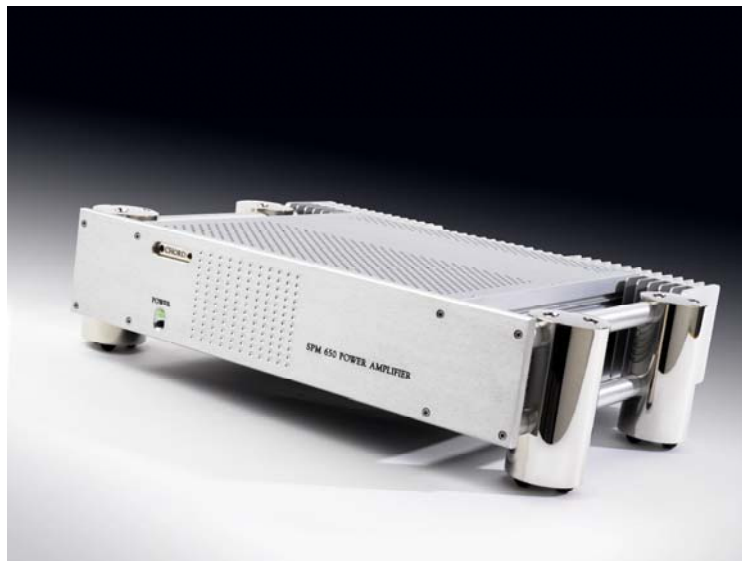


# NEW PRODUCT INFORMATION SHEET

## SPM650 Power Amplifier

### Product Description

Chord Electronics is pleased to launch the SPM650 power amplifier. With our considerable experience in the design and manufacture of the world's best consumer and professional amplifiers, this latest design of power amplifier utilises our high frequency power supply techniques and our own proprietary lateral structure dual-die MOSFETs. The SPM650 retains the clarity and style of our larger amplifiers but in a more compact case.



Integra Legs shown are optional

The SPM 650 is a full width design capable of driving low impedance loudspeakers, and delivers 130 watts rms per channel into 8 ohms or 170 watts rms per channel into 4 ohms. The dynamics of the SPM 650 will indeed bring you closer to the music.

A high current mains filter ensures that the amplifier is shielded from disturbed mains as well as ensuring that the mains is untouched by emissions from the amplifier. The output from the power supply uses a truly innovative “Dynamic Coupling” technique whereby the positive and negative rails are mutually coupled by a strong magnetic flux. The result being that if a high demand is put on one rail, the energy required is actually drawn equally from both rails. This keeps the amplifier balanced dynamically and the reference point perfectly clean. Magnetic current sensors provide electronic shutdown.

The SPM 650 comes fully loaded with both balanced and single input connections and gold plated speaker binding posts to accept both spade or banana cable connections. Machined from solid aluminium the SPM650 has a superb rigid construction that gives unsurpassed vibration damping with stunning looks to match.

## Product Specification

OUTPUT POWER	130W rms per channel @ 0.05% distortion into 8Ω, 170W rms per channel into 4Ω, 200W rms into 2Ω. Thermal limitation only, 1 channel driven.
DYNAMIC HEADROOM	200W rms per channel into 8Ω, 360W rms per channel into 4Ω. - 1 KHz, 20 cycles on, 480 cycles off. Peak pulses 8 milliseconds burst 75V peak (the equivalent of 400W per channel peak into 2Ω)
FREQUENCY RESPONSE (8 OHMS)	-1dB, 0.2Hz to 46KHz -3dB, 0.1Hz to 77KHz
FREQUENCY RESPONSE (4 OHMS)	-1dB, 0.2Hz to 39KHz -3dB, 0.1Hz to 75KHz
SIGNAL TO NOISE RATIO	Better than -103dB, 'A' weighted two thirds power.
CHANNEL SEPARATION	Better than 95dB.
PRE-AMPLIFIER INPUT CONNECTION	2 x gold-plated, fully balanced XLR sockets. 2 x gold-plated custom phono sockets, unbalanced.
INPUT IMPEDANCE	100kΩ. Unbalanced/Balanced.
INPUT CAPACITANCE	<30pf.
OUTPUT IMPEDANCE	0.02Ω
OUTPUT INDUCTANCE	2.6μH
OUTPUT CONNECTIONS	4 x 4mm gold plated binding posts (1 pair Black, 1 pair Red)
SLEW RATE	70V per μS, 1KHz 20V square wave
GAIN	30dB.
STABILITY	Unconditional
DIMENSIONS (Standard)	420mm (w) x 355mm (d) x 88mm (h)
WEIGHT	10Kg



**Chord Electronics limited**

The Pumphouse  
Farleigh Bridge  
Farleigh Lane  
East Farleigh  
Kent ME16 9NB

Tel: +44 (0)1622 721444

Fax: +44 (0)1622 721555

Email: [sales@chordelectronics.co.uk](mailto:sales@chordelectronics.co.uk)

<http://www.chordelectronics.co.uk>

